



■ TS66 'Energy' Rebated Door System



AMS : Wallingstown : Little Island : Cork : Ireland : Tel : 00353 21 4705100 : Fax : 00353 21 4705199 : email : pohara@ams.ie

■ CLICK: www.ams.ie



■ CLICK: www.ams.ie

TS66 'Energy' Rebated Door System



AMS TS66 energy door system offers excellent performance characteristics coupled with wide range of threshold and glazing options, making it one of the more versatile and sustainable doors systems on the market today. The system is 66mm in depth and can be glazed both internally and externally with units ranging from 28mm to 48mm in depth. The system is available with a heavy duty door sash to achieve higher and wider door leaf options. On double doors the system can have a rebated meeting stile offering a master and slave option or can be 'any open door' stile which allows both leaves to be mastered.

The system has been tested to BS6375 Part 1, PAS 23 and security tested to PAS 24. It offers BM Trada 'Q' mark and Secured by Design certification. The system has also been tested to BE EN1191 to 1,000,000 cycles for repeated opening and closing and also for locking and un-locking, achieving a Class 8.

Achievable door U-values range from 1.5 W/m²K with triple glazing to 1.9 W/m²K with double glazing. Contact our commercial department for further information.

The system offers internally beaded options on all doors whether open in or open out and can be dual or single colour. The system also offers wood finished from our extensive Decoral range.

What AMS is offering is a highly versatile, energy efficient, secure and sustainable door system with excellent performance characteristics ensuring quality and flexibility in design.

TS66 'Energy' Rebated Door System

Advantages:

Range of threshold options available.

Range of mid rails available

Can accommodate 28 to 48mm glazing.

Internally or externally bead.

Sash sizes up to 1.1m x 2.6m high achievable

T&G Panel available with therm strip isolator.

Tested to 1,000,000 cycles.

Security Performance:

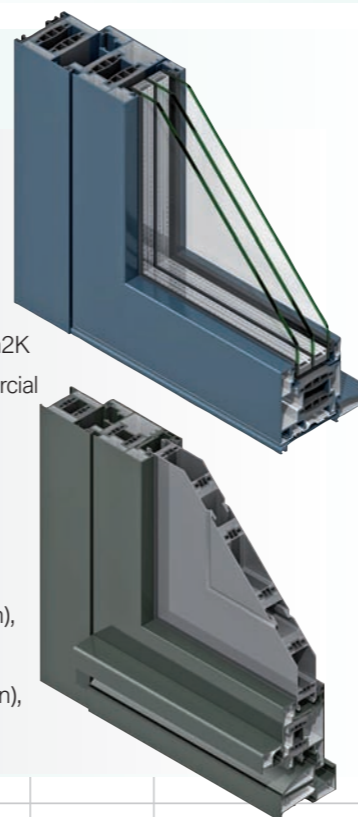
Tested to PAS 24:2012

Thermal Performance:

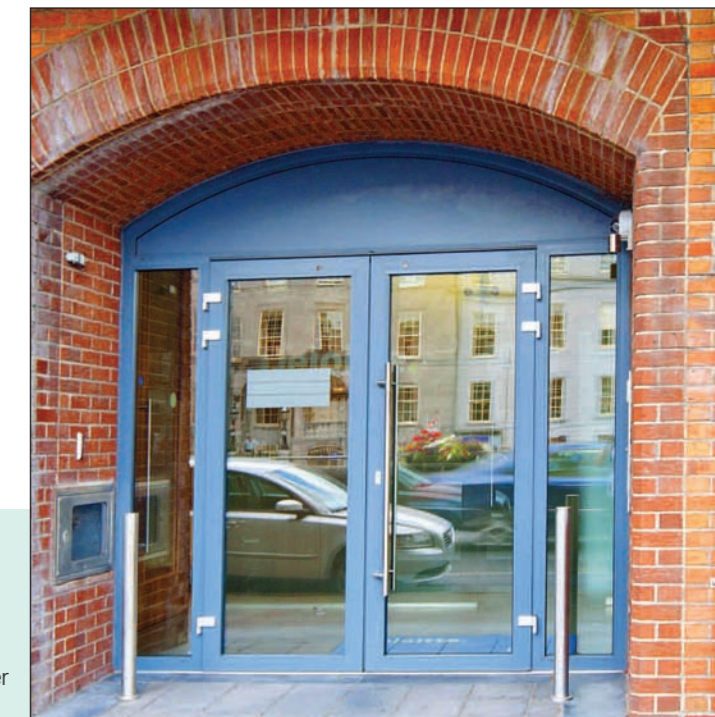
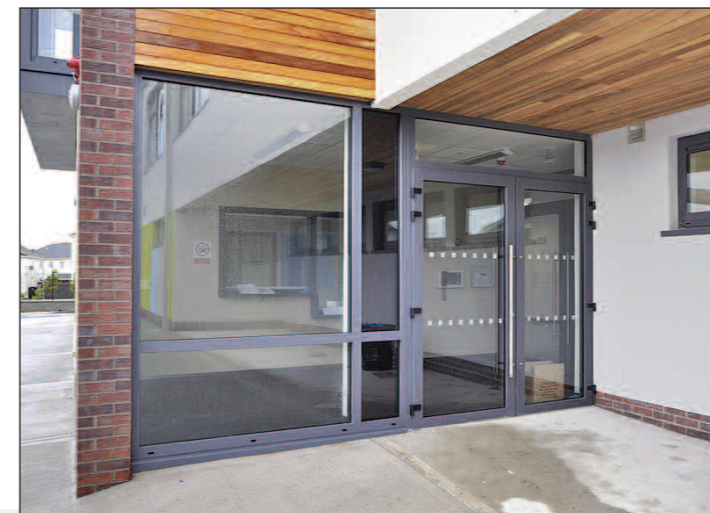
Achievable door U-values range from 1.5 W/m²K with triple glazing to 1.9 W/m²K with double glazing. Contact our commercial department for further information.

Weather Performance:

- :: Tested to BS 6375-1 2009.
- :: Air Classification – A4: 600 Pa.
- :: Water Tightness – 9A:600 Pa (Open in), E750: 750 Pa (Open out).
- :: Wind Resistance –C3:1200Pa (Open in), E2400:2400Pa (Open out)



Colour Options



Polyester Powder Coatings

At AMS we can help you bring your design to life with our wide choice of paint colours and finishes. We offer a varied range of architectural polyester powder coating finishes, including dual colour as standard, that are guaranteed through the 'Qualicoat' approved applicator scheme, of which AMS is a continuing member.

All polyester powder coating is carried out in house on a state of the art vertical paint line. Our eight stage chromate free pre-treatment process meets all of the latest environmental legislation and ensures a quality finish and service every time.



Decoral

The Decoral system is a process of applying a wood grain effect onto aluminium profiles. Decoral has all the aesthetics and texture of wood but has a major advantage in that there is none of the associated maintenance costs. We offer a 10 year guarantee on wood grain finishes and due to popular demand our portfolio of wood grain options is ever increasing.

Available finishes include:

Mahogany, golden oak, dark oak, natural oak, teak, raw teak, teak softwood, chestnut, oregon, natural oregon, yellow oregon, oregon pine, knotty pine, natural maple and cinnamon.

