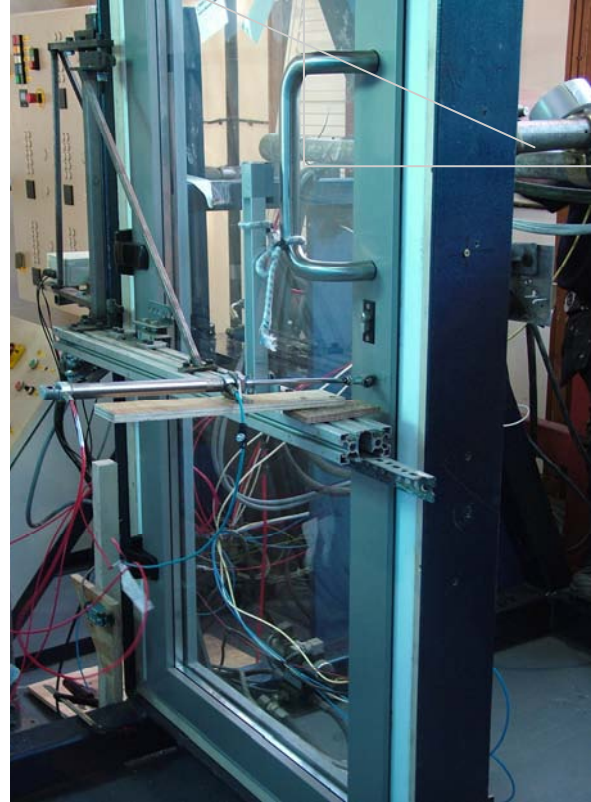


STANDING THE TEST OF TIME



AMS TS66 rebated door achieves 1,000,000 cycles
AMS RBS66 achieves BM Trada Q-mark certification

TS66 REBATED DOOR SYSTEM—1,000,000 CYCLE TEST

AMS TS66 energy door system has just completed one of the most rigorous and demanding tests any door will ever be put through. The system has completed 1,000,000 cycles, not just on opening and closing, but also 1,000,000 cycles on locking and unlocking. This would mean that, when in use, if the door was locked 8 times a day, 7 days a week, it would equate to a 342 year life span.

What has just been achieved is incredible, explains by sales director, Pat O'Hara. We started this test way back in October 2011 and it has taken until November 2011 for the test to be completed without any difficulties whatsoever.



After examining the door last week it is still fully operational and in perfect working order. So much so that we propose to bring it back to our factory, install it as one of our every day, high use, doors and monitor it over time to see if it will ever fail.

The TS66 door has now completed nearly ever test possible, it has achieved BS 6375 Part 1, PAS 23 and Pas 24 and now an incredible 1,000,000 cycles which must make it one of the most durable, high performing doors on the market today.

This again shows that AMS are fully committed to producing high quality systems. We believe in investing in all the necessary resources in testing and research, so as to ensure our customers are provided with top quality system at all times. It also ensures that we are in a position to give our customers all the support they need, to achieve CE marking when it is introduced and becomes mandatory in July 2013.

Thermal performance:

The TS66 door system can achieve U-values as low as 1.53 W/m²K, contact our technical department for further information and project specific U-value calculations.

Weather Performance:

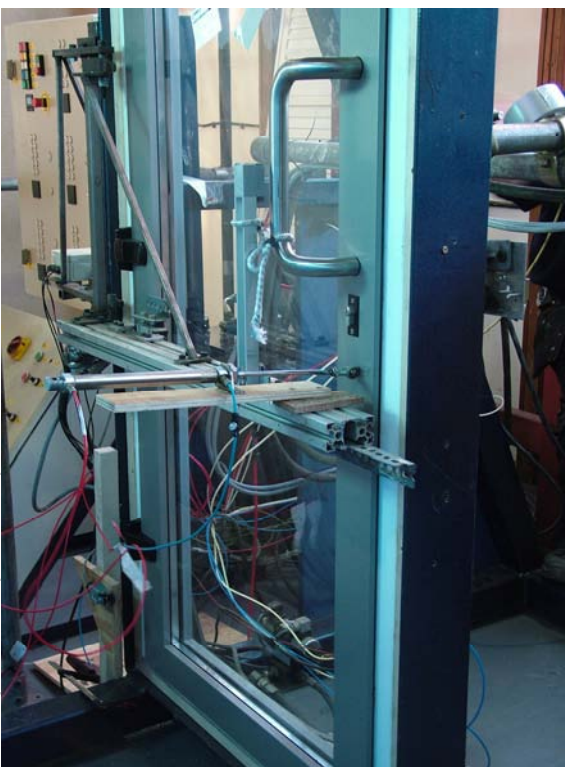
- Tested to BS 6375-1 2009,
- Air Classification – Class 4: 600 Pa
- Water Tightness – E750: 750 Pa.
- Wind Resistance – E2400: 2400 Pa.

Operation Performance:

- Tested to PAS 23-1:1999
- Tested to PAS 24-1:2007 + A1:2009
- Tested to EN 1191:2000, 1,000,000 cycles opening & closing and locking and un locking.

Advantages

- Range of threshold options available.
- Range of mid rails available
- Can accommodate 24 to 48mm glazing.
- Internally or externally bead.
- Sash sizes up to 1.1m x 2.6m high achievable
- T&G Panel available with therm strip isolator.
- Colour match hinges available



RBS66 CASEMENT WINDOW SYSTEM

Once again, AMS comes up trumps with independent system testing in the UK. Our RBS66 window system has successfully completed a tough testing sequence in Chiltern dynamics. This is our new reverse butt crimp window system, which is internally beaded and comes with a choice of frame/sash combinations. The system is available in single/dual colour or 'decoral' wood finish. The system has extremely slim sight lines which brings us back to the days of the original slim aluminium window systems.



The window presented to Chiltern Dynamic's was internally beaded and was 1800mm wide x 1800mm high. It consisted of a very large top hung, a large side hung and one large fixed light. The system was tested to BS 6375 Part 1:2009 - weather tightness, BS 6375 Part 2:2009 - operation and strength and BS 7950:1997 enhanced security performance. To make matters even more interesting, and also more difficult to achieve good air leakage reading, this window was internally beaded.

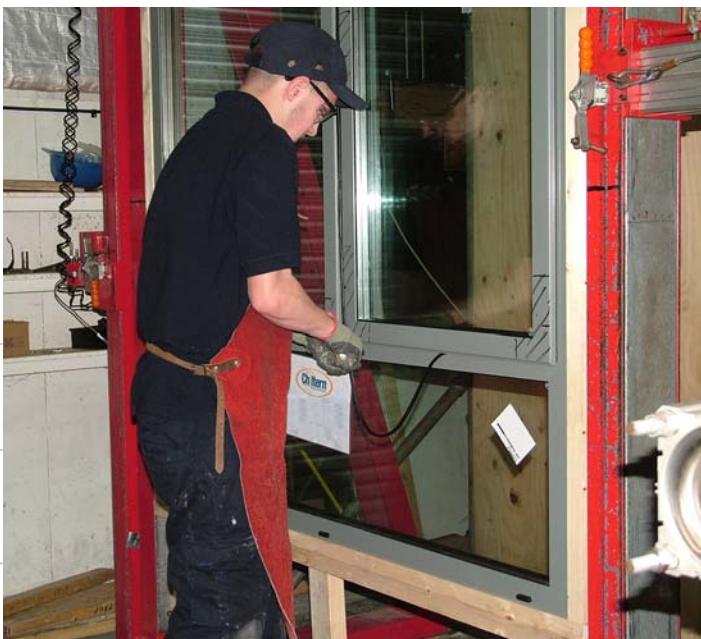
"We wanted to cover every conceivable combination remarks sales director, Pat O'Hara. We were so confident in the system that we pushed the repeated opening and closing test from 10,000 to 20,000 cycles



achieving a category 3 classification". The system is now part of the BM Trada quality 'Q' mark scheme and also meets all the requirements of secure by design. To achieve a rating of class 4 at 600Pa on air, 1050 Pa on water and 2400 Pa wind resistance on such a large window is a huge achievement. The safety pressure alone of 3600 Pa is a very high standard to meet for any window system, and is the equivalent to 166 mph winds.

This proves that testing, not only at independent accredited organisations, but also in house at Little Island in Cork, is a valuable and essential part of our day to day business.

The system is now readily available to all our customers and is already being installed in projects in the UK to great success. Now that the RBS66 system is part of the renowned Q mark scheme, we look forward to it becoming another part of our competitive and reliable suite of window systems.



Furthermore with all initial type testing in place, we are in a position to aid all our customers with the process of achieving CE marking which becomes mandatory in July 2013.

Weather Performance:

- Tested to BS 6375-1 2009,
- Air Classification – Class 4: 600 Pa
- Water Tightness – E1050: 1050 Pa.
- Wind Resistance – E2400: 2400 Pa.

Operation Performance:

- Tested to BS 6375-2:2209
- Achieved class 3 to BS EN 1191:2000

Security Performance:

- Tested to BS 7950:1997, A4, A5, A6 & A7



AMS Architectural & Metal Systems



AMS : Wallingstown : Little Island : Cork : Ireland : Tel : 00353 21 4705100 : Fax : 00353 21 4705199.

CLICK: www.ams.ie

